

RC Škoda Octavia 1

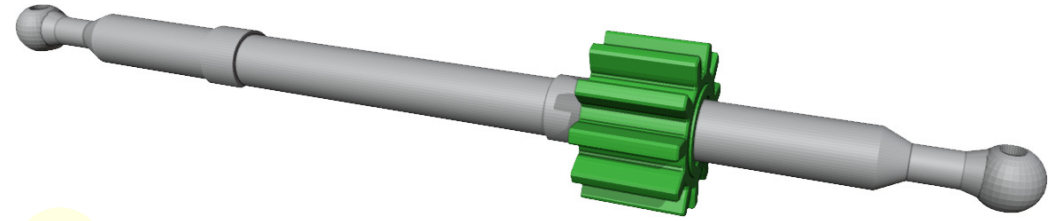
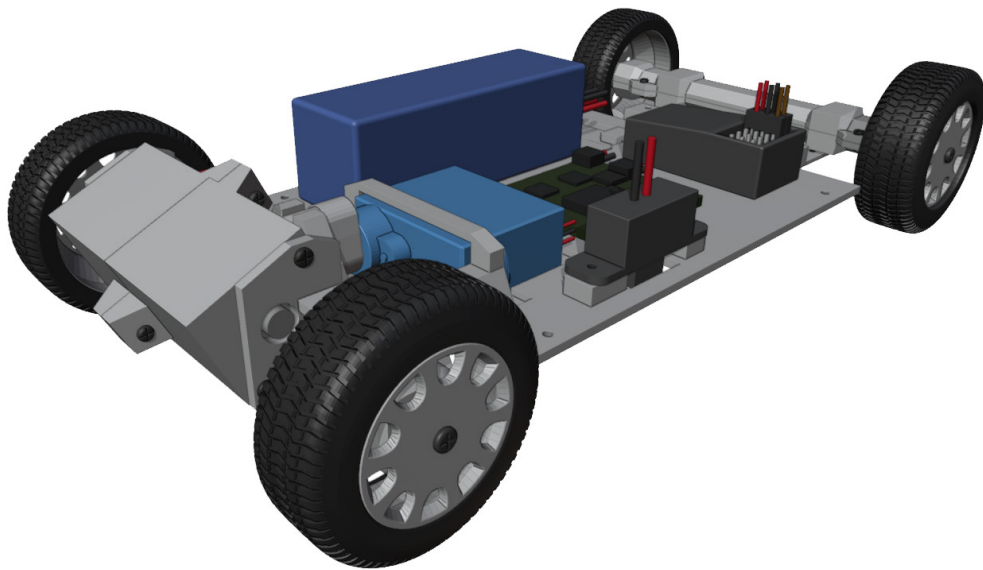
1:24 scale, fully 3D printed on FDM



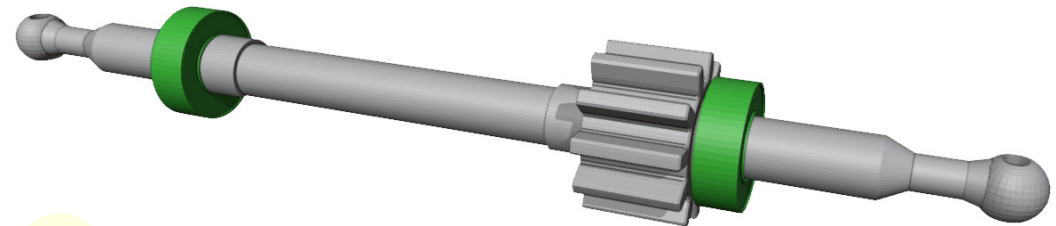
More models at:

www.3drcmodels.com

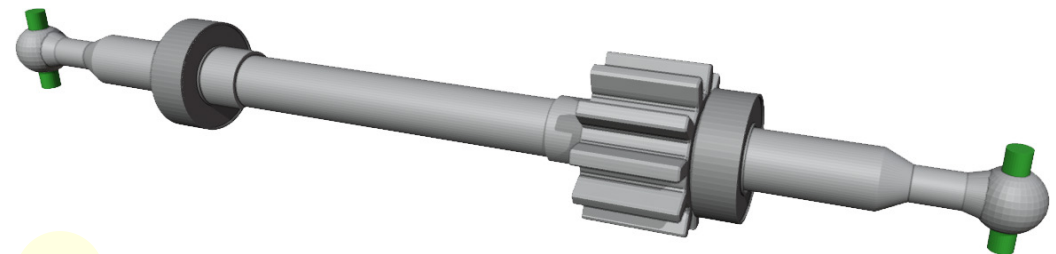
1. Chasses



1



2

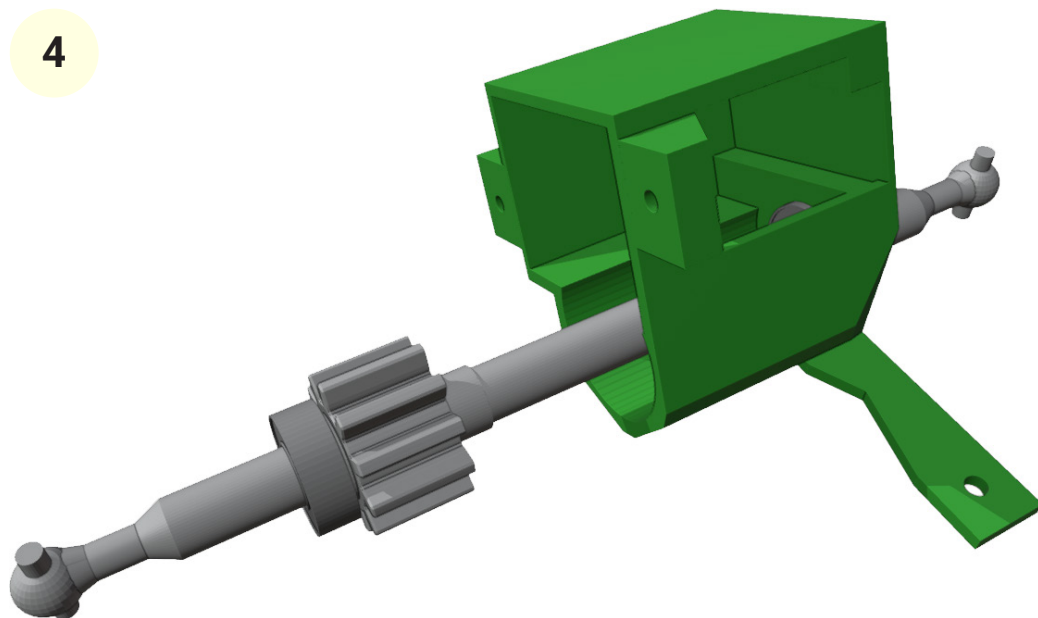


3

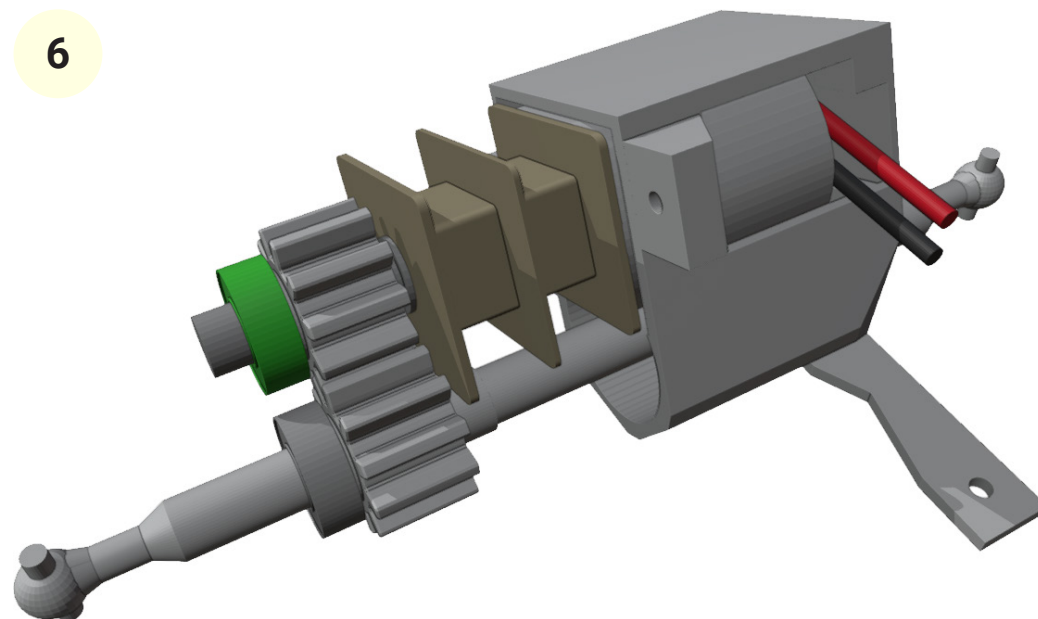


You need 2x 4mm long ~1.1mm thin wire.
Best are paper clips.

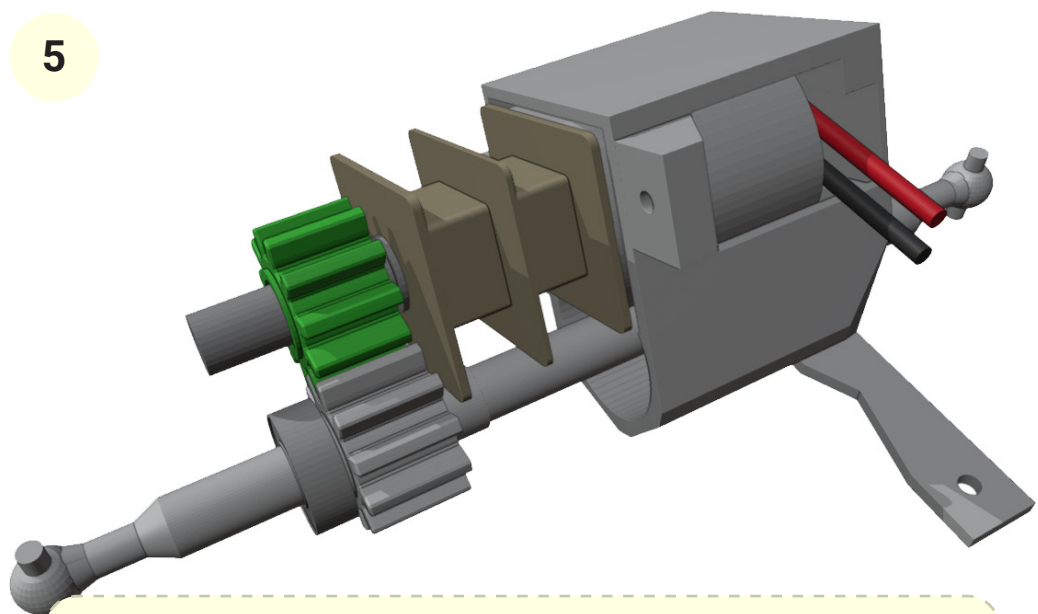
4



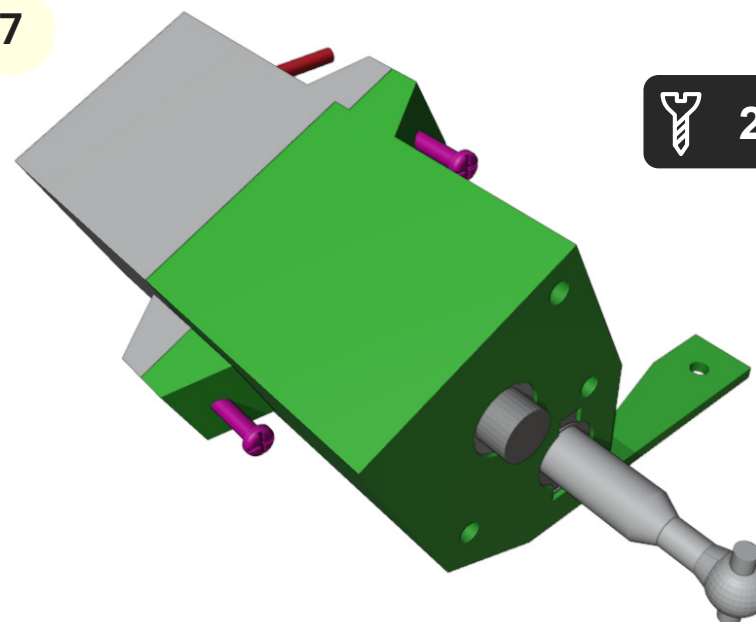
6



5



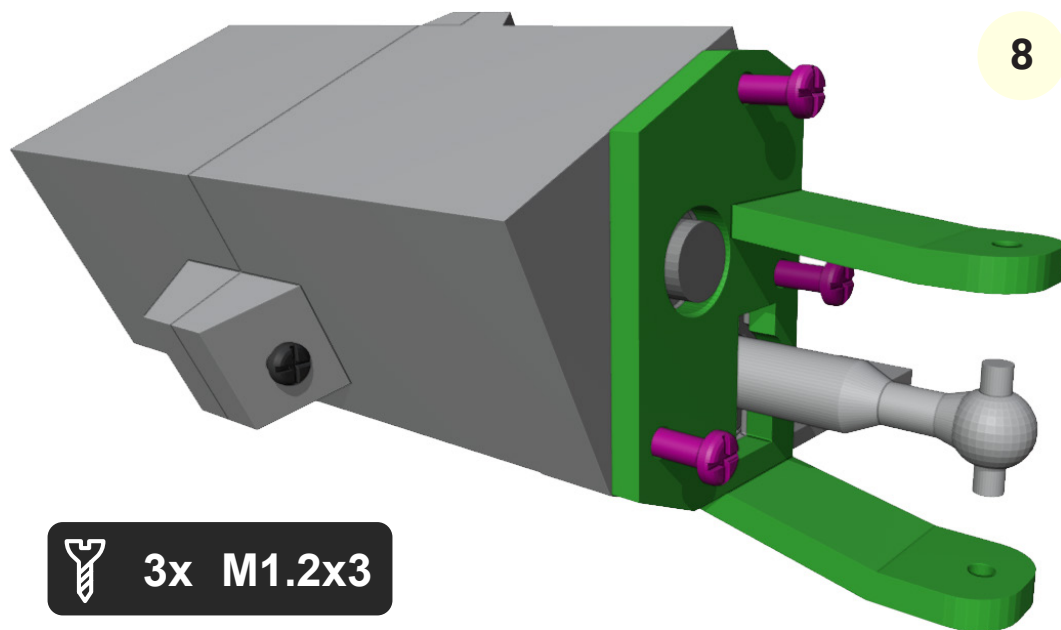
7



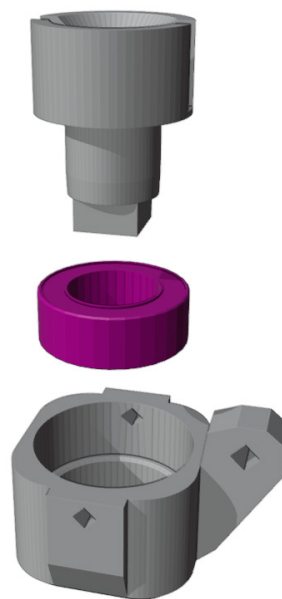
2x M1x5



You can choose motor RPM. For faster driving use 500 - 750 RPM. I have used 300 RPM.



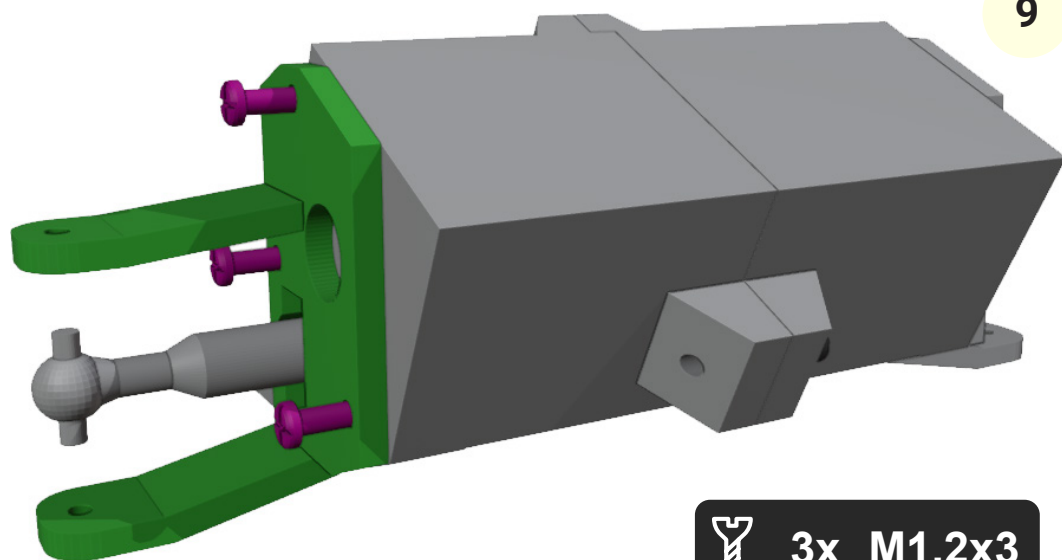
 3x M1.2x3



2x

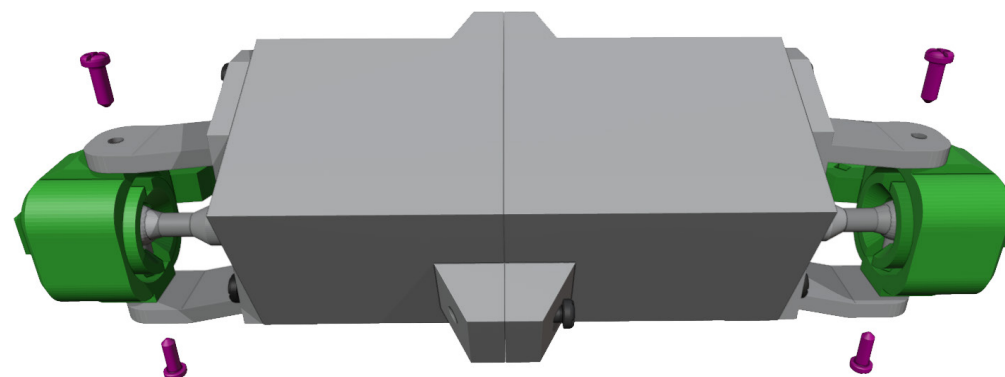


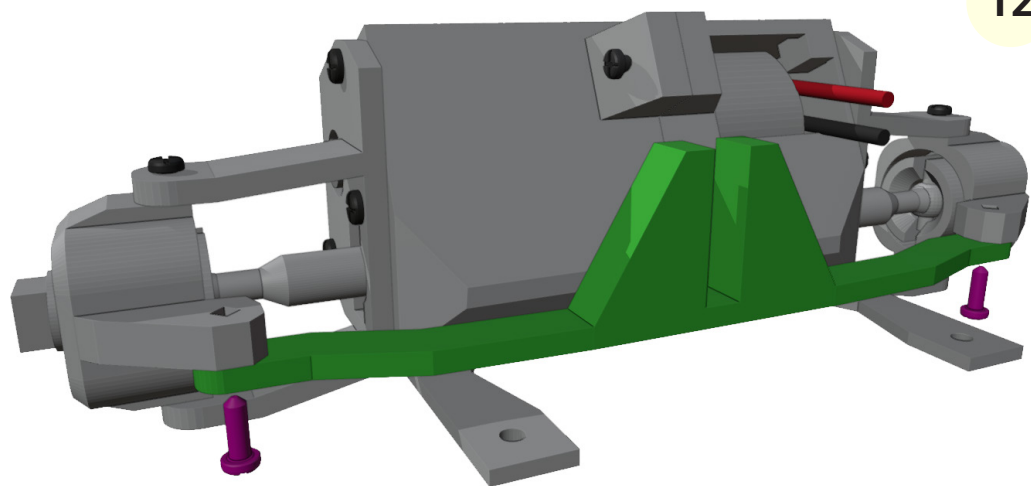
Bearings 6x3x2 has to fit very tight on axle. If axle is too big, you can use sandpaper.



 3x M1.2x3

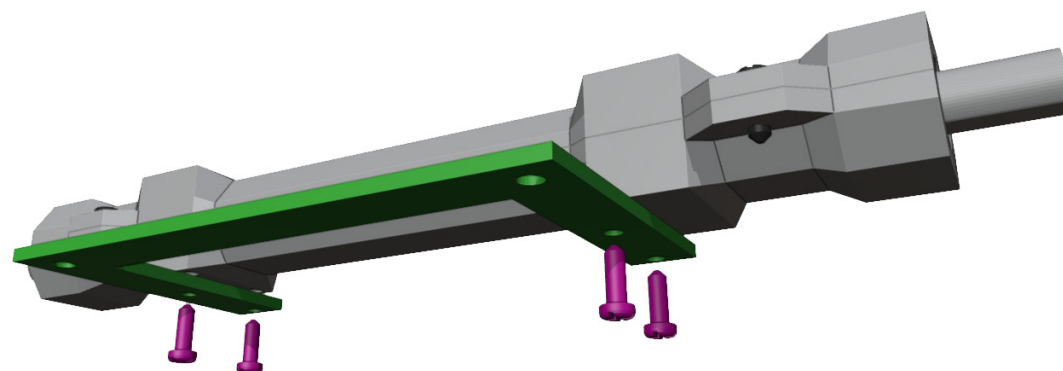
 4x M1x4





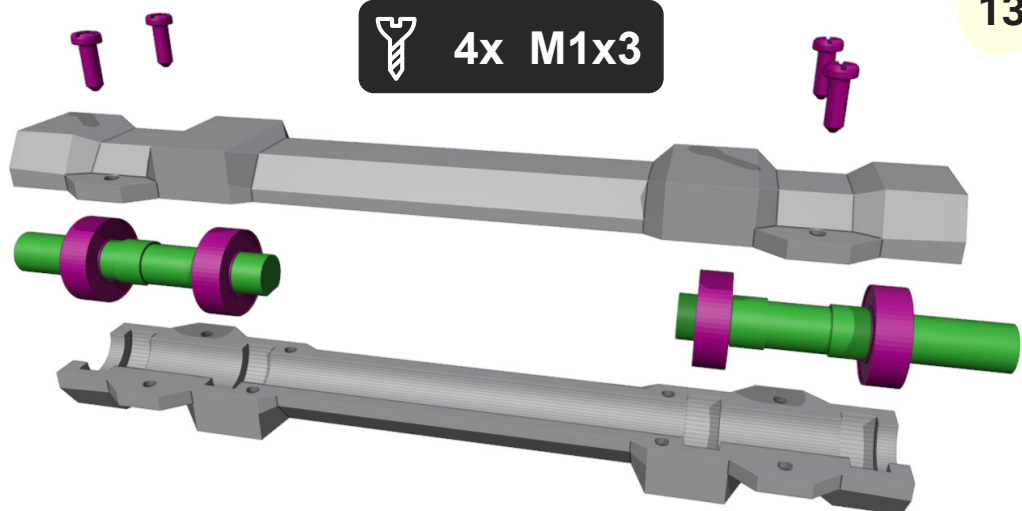
12

2x M1.2x4



14

4x M1x3

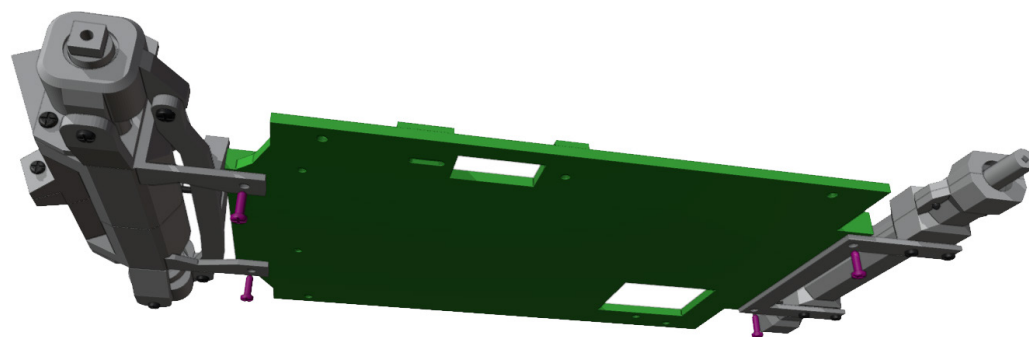


13

4x M1x3



Bearings 6x2x3 should fit quite firm to axle. If necessary, you can again use sandpaper.

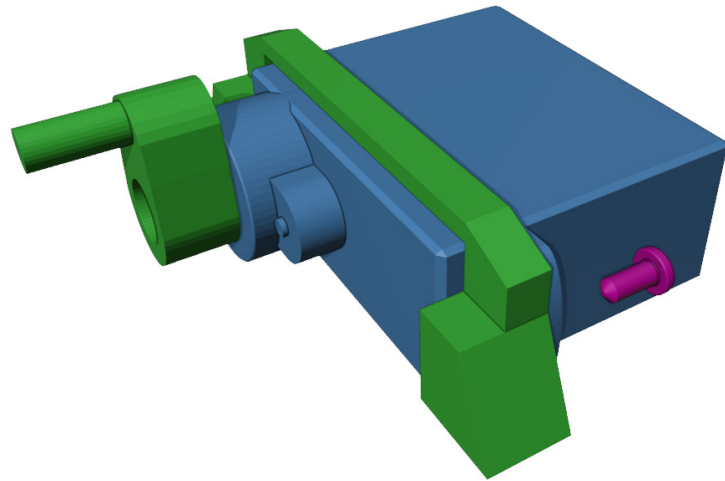


15

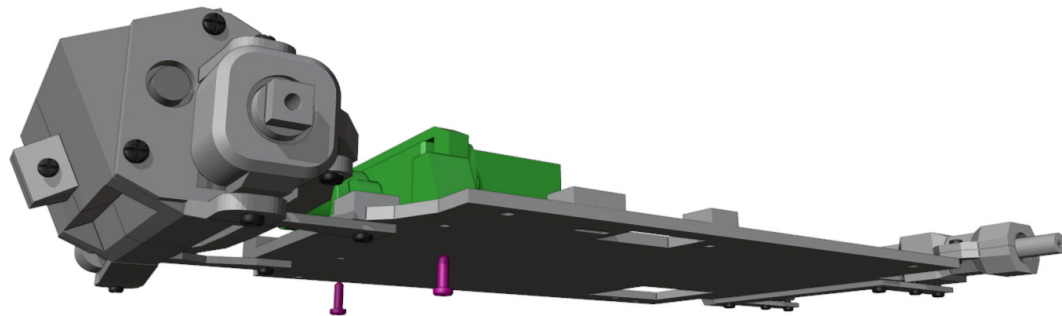
4x M1.2x4



Steering pin have to be very tight so it won't slip during steering.

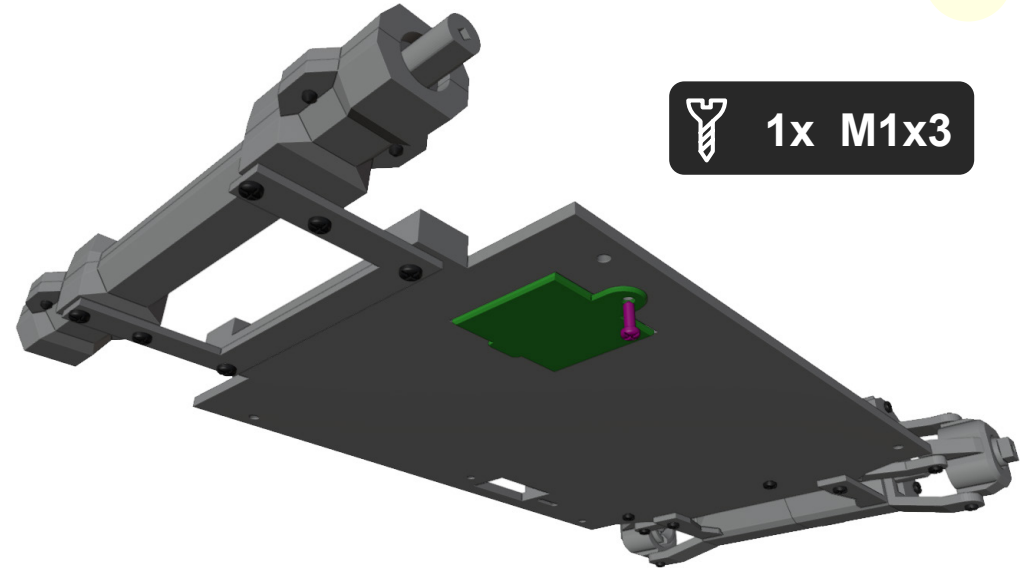


16



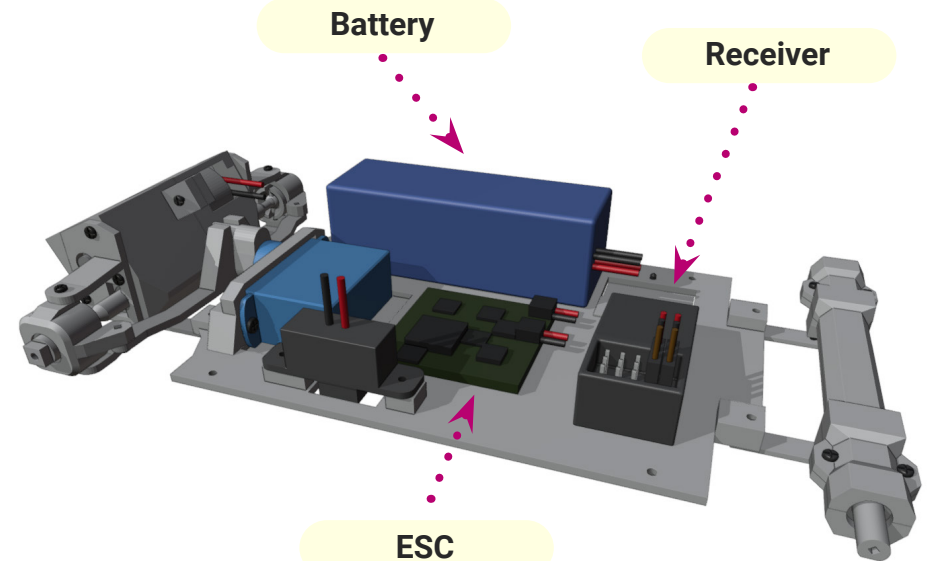
2x M1x5

17



1x M1x3

18

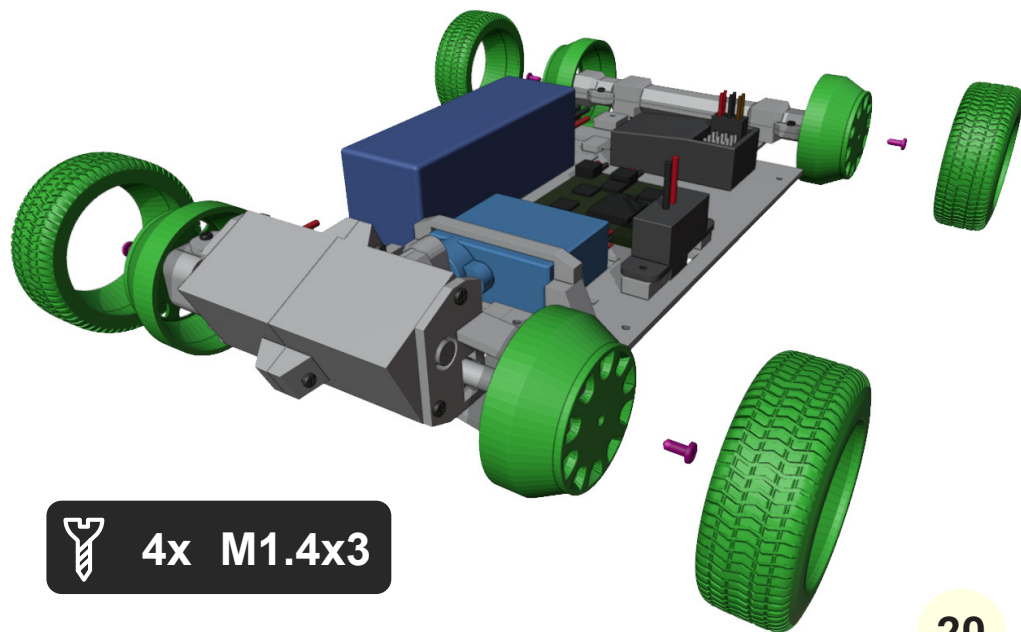


Battery

Receiver

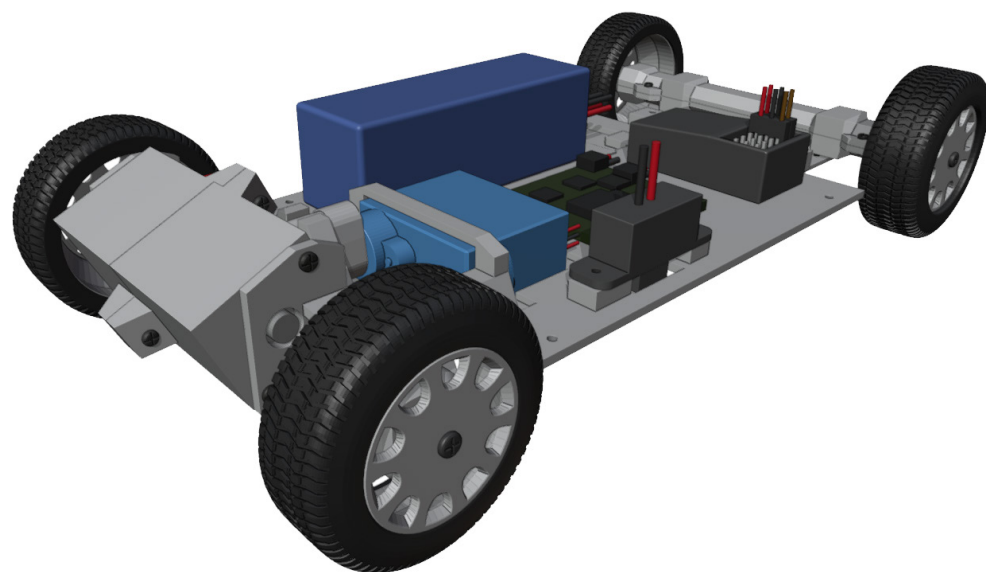
ESC

19



4x M1.4x3

20



Great job!

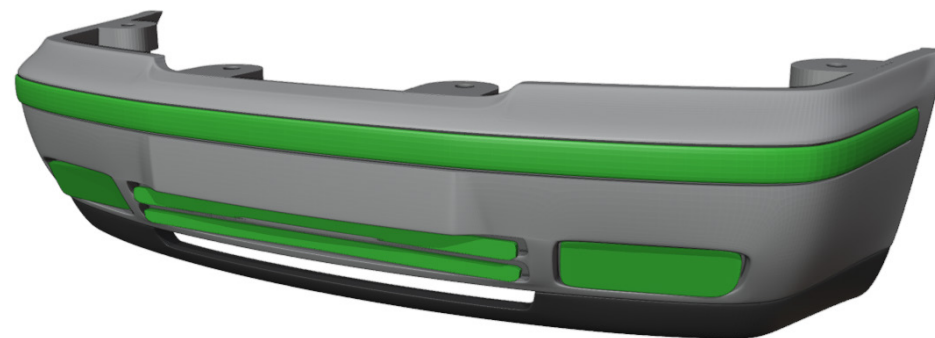
The chassis is done!
Now let's do the body.





1

 4x M1x5

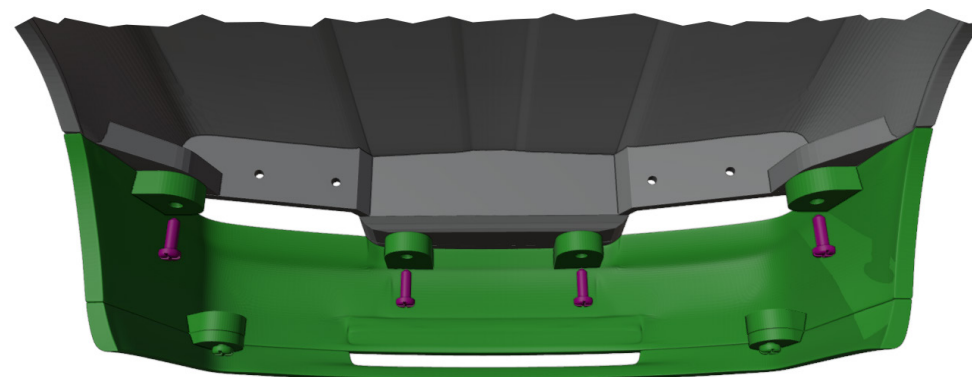


3



2

 2x M1x4



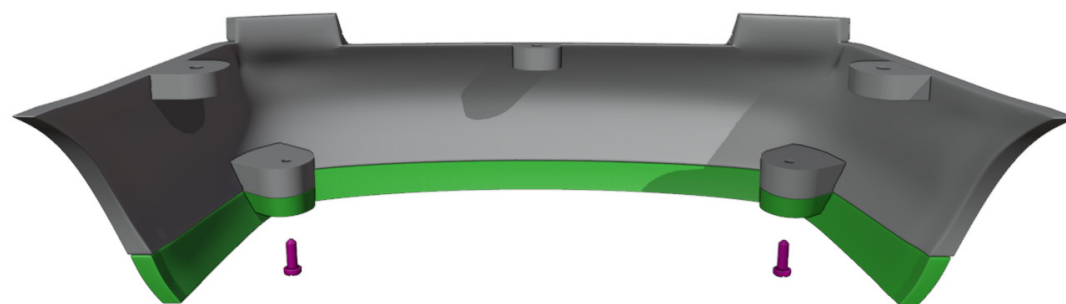
4

 4x M1x4

5



7

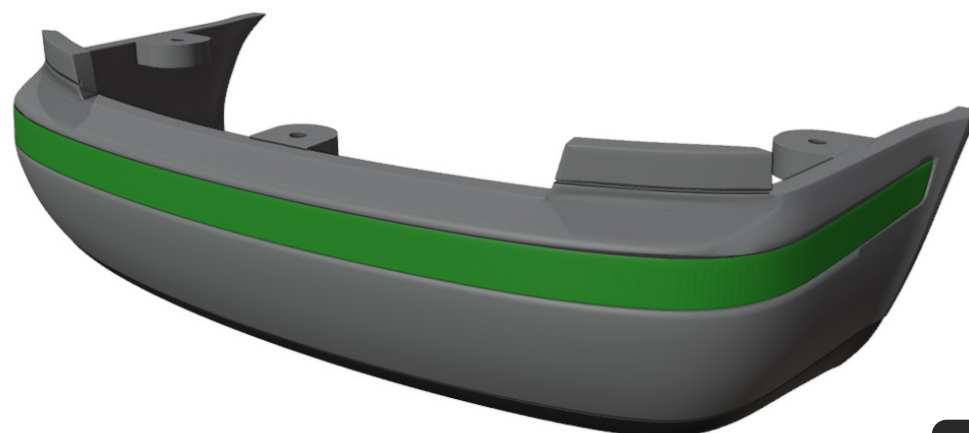


2x M1x4

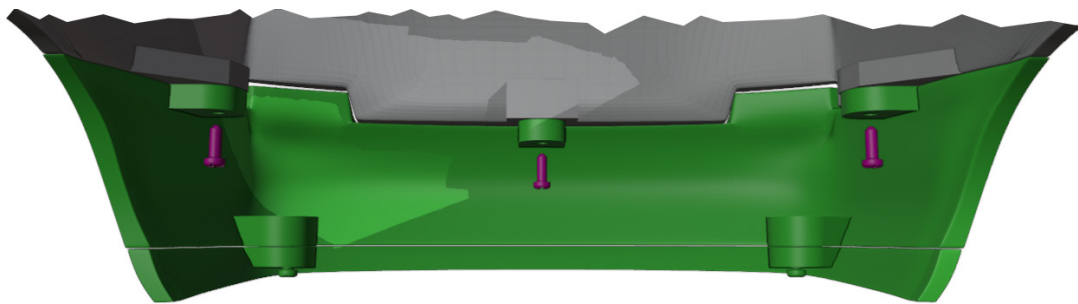
6



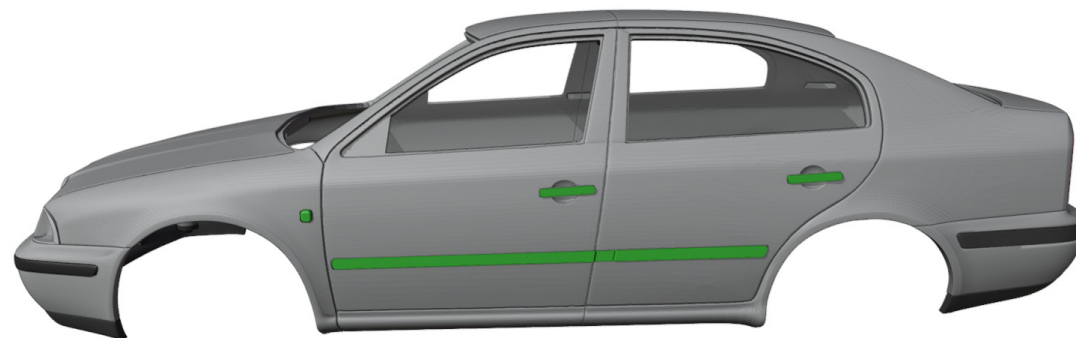
8



 4x M1x4



9



11



10



12

13



15



14



Great job!

We are done...

For more models, visit:

www.3drcmodels.com

